

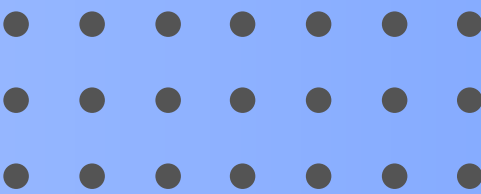


TOP USE CASES FOR

BEP20 TOKENS IN 2024



  www.blockchainx.tech 



TOP USE CASES FOR BEP20 TOKENS IN 2024



The **BEP20 token standard**, part of the Binance Smart Chain (BSC), continues to thrive as a popular choice for decentralized applications (dApps), DeFi projects, and token-based economies. In 2024, we are witnessing BEP20 tokens expanding into new industries and use cases. These tokens offer developers and businesses a flexible, fast, and cost-effective way to build decentralized ecosystems.





DEFI PLATFORMS

The largest use case for BEP20 tokens is still in Decentralized Finance or DeFi. Thanks to BSC's lower transaction costs and high throughput, BEP20 tokens are widely adopted by DeFi projects, including:

- Decentralized Exchanges (DEXs)
- Yield Farming and Staking
- Lending and Borrowing

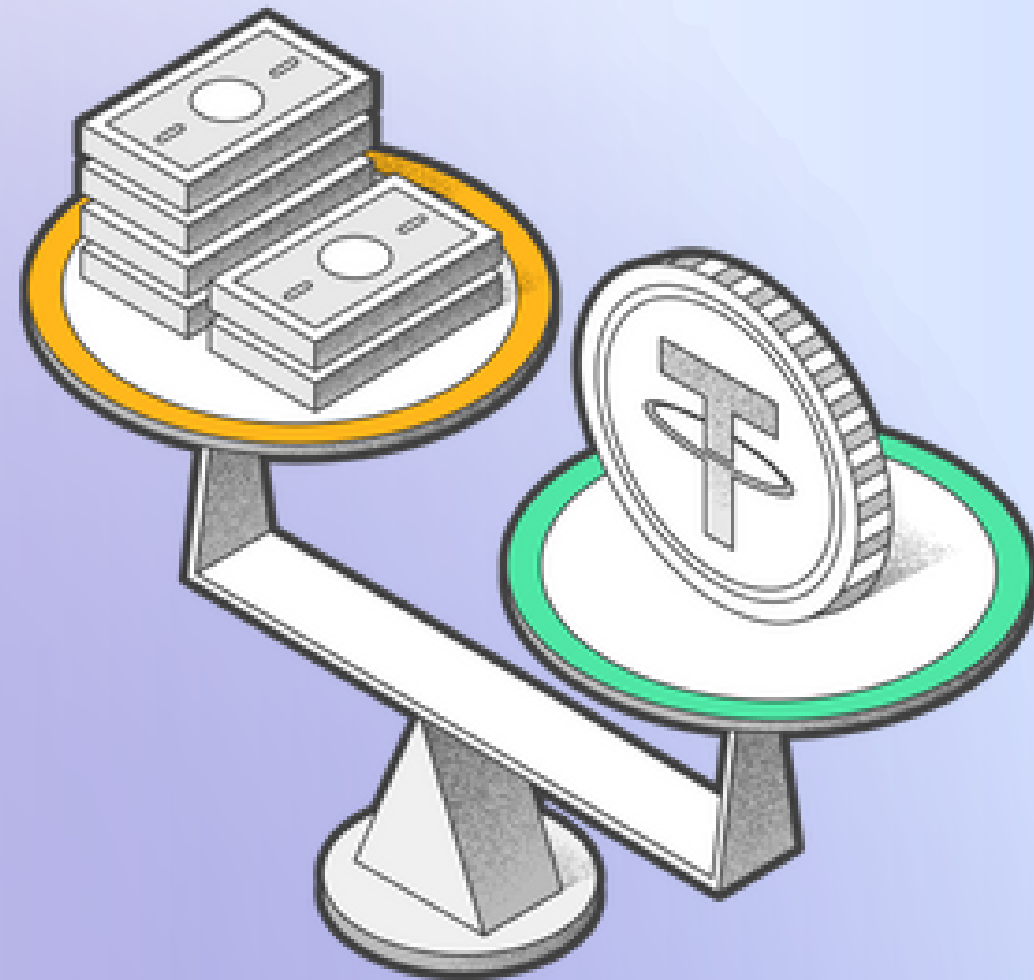
GAMING AND NFTS

Another hot trend is the interaction between BEP20 tokens and Non-Fungible Tokens (NFTs) and blockchain-based gaming. It is noteworthy that blockchain games integrated with BEP20 tokens for further in-game content or rewards are gradually gaining popularity because of their speed and cost. Key areas include:

- In-game Assets
- NFT Marketplace Integration

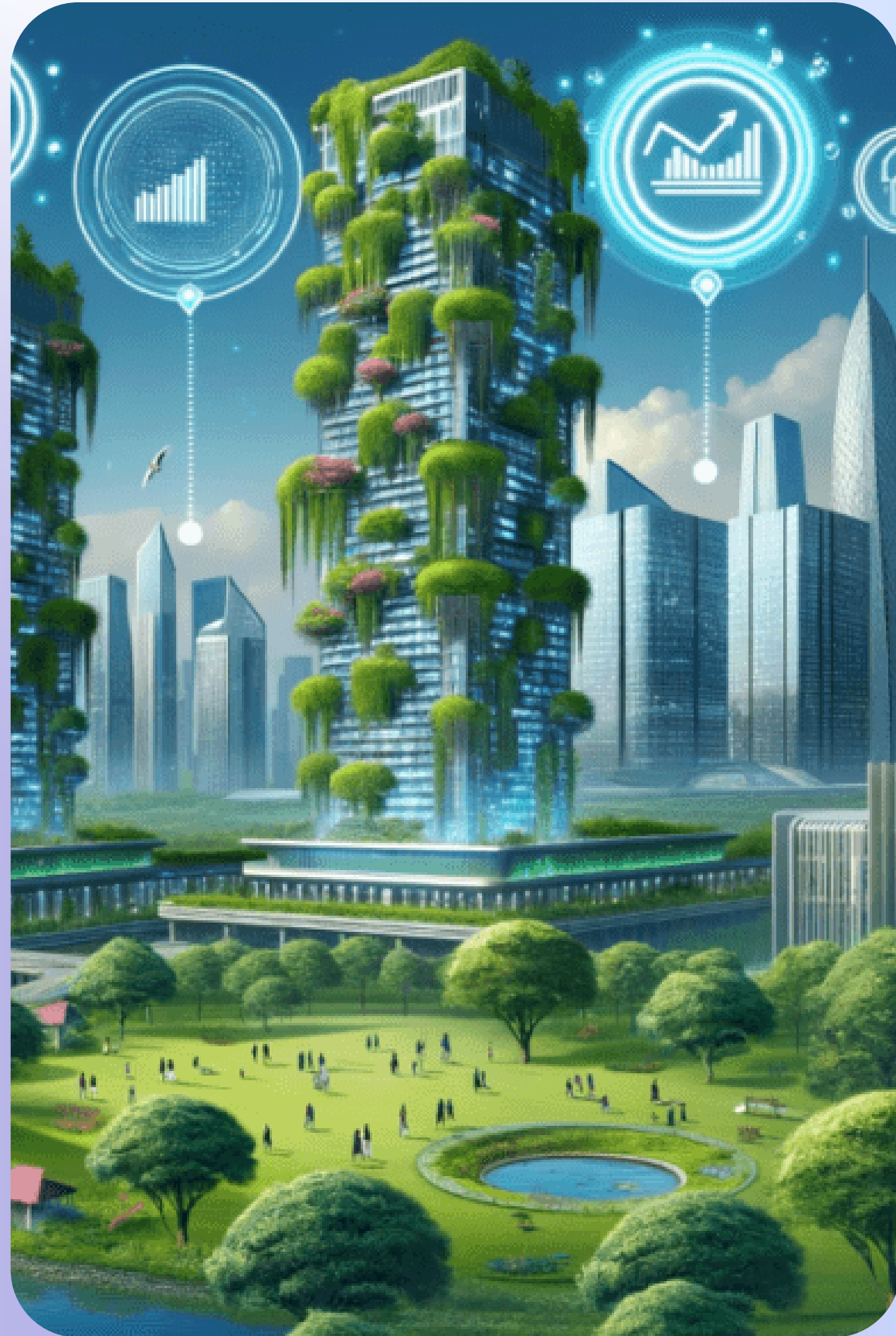


STABLECOINS AND PAYMENTS



BEP20 tokens are also used when creating tokens of stablecoins tied to real-world commodities, including the U.S. dollar. These stablecoins enable fast and low-cost transactions across borders, making them ideal for:

- Cross-border Payments
- E-commerce Solutions



TOKENIZED ASSETS AND REAL ASSET WISE TOKENIZATION

Currently, **BEP20 token development** utilized to represent physical assets thus acting as intermediaries between the Traditional economy and the Blockchain. Tokenization allows for fractional ownership and greater liquidity in assets like:

- Real Estate
- Precious Metals and Commodities

DECENTRALIZED AUTONOMOUS ORGANIZATIONS (DAOS)

BEP20 tokens are also used often for governance in Decentralized Autonomous Organizations more often known as DAOs. It is important to note that these tokens are voted to represent voting power in the parcel decision throughout the decentralized sectors of a community. Some use cases include:

- Cross-border Payments
- E-commerce Solutions



CHARITY AND THE OUTCOME OF THE SOCIAL IMPACT PROGRAMMES

Over the past couple of years, blockchain technology has been used in charity and other social impact causes, and BEP20 tokens are not immune either. These tokens are being used to create transparent, efficient donation systems that allow contributors to track where their funds go, including:

- Transparent Donations
- Social Tokens



KEY CONCEPTS

Key concepts in computer science include algorithms, which serve as the fundamental building blocks of computational tasks. Algorithms are essential for solving problems efficiently and play a crucial role in various applications, from search engines to cryptography. Data structures refer to the methods of organizing and storing data to facilitate access and modification. Examples include arrays, linked lists, trees, and graphs. Artificial intelligence (AI) involves the development of systems capable of performing tasks that typically require human intelligence, such as learning, reasoning, problem-solving, perception, and language understanding.



CONCLUSION

These BEP20 tokens are expected to sustain dominance in different helpings of DeFi; gaming; non-fungible tokens; tokenized resources; and social revolution projects in the year 2024. Due to its strong layout, the Binance Smart Chain offers great opportunities for developers and businesses and the BeP20 tokens add its flexibility. With the ecosystem constantly expanding, BEP20 tokens will provide possibilities for development and the integral nature of experiencing the digital economy will change.





THANK YOU!



+91 7708889555



www.blockchainx.tech



contact@blockchainx.tech