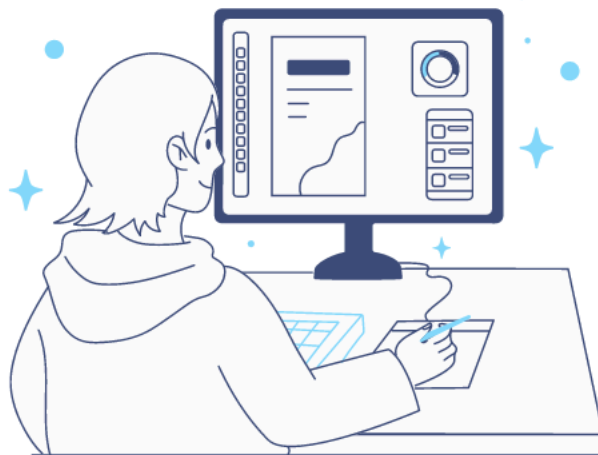


Can Roulette Software Be Customized to Include Different Types of Betting Systems?

The world of online gaming, particularly in the realm of casino-style games, has witnessed significant advancements over the past few decades. Roulette, a staple in both brick-and-mortar and virtual casinos, has not been left out of this technological evolution. One of the most frequently asked questions regarding roulette software is whether it can be customized to include various betting systems. The short answer is yes, and this ability opens a world of possibilities for players and operators alike.

In this essay, we will explore how **roulette software** can be customized to include different betting systems. We will discuss the nature of roulette betting systems, the technology behind customization, the benefits and challenges of implementing these systems, and how customization enhances user experience. Additionally, we will consider the ethical and legal implications of customizing roulette software for betting systems.

Can roulette software be customized to include different types of betting systems?



<https://www.aistechnolabs.com/>

Understanding Betting Systems in Roulette

Betting systems in roulette are strategies that players use to determine how they will place their bets, both in terms of the size and positioning of their wagers. These systems are often classified into two categories: *progressive betting systems* and *non-progressive betting systems*.

- 1. Progressive Betting Systems:** These systems involve adjusting the size of the bet based on the outcome of the previous round. Some popular progressive systems include:
 - **Martingale:** In this system, the player doubles their bet after every loss, with the idea that a win will eventually recover all previous losses and yield a profit equal to the original bet.
 - **Fibonacci:** Based on the famous Fibonacci sequence, players increase their bets according to the sequence after losses and decrease them after wins.
 - **D'Alembert:** This system involves increasing the bet by one unit after a loss and decreasing it by one unit after a win.
- 2. Non-Progressive Betting Systems:** These systems do not involve changing the bet size based on previous outcomes. Instead, they rely on strategic placement of bets. Examples include:
 - **Flat Betting:** Players place the same bet every round, regardless of previous results.
 - **Red-Black Betting:** Players alternate between betting on red and black, often with no progression in bet size.

The popularity of these betting systems has led to many players seeking [roulette software](#) that supports their preferred strategies. As a result, the ability to customize software to include these systems has become a key feature in the gaming industry.

Customizing Roulette Software: The Technology Behind It

Roulette software is built using sophisticated algorithms that simulate the mechanics of a real roulette wheel. These algorithms include random number generators (RNGs) that ensure the outcome of each spin is unpredictable and fair. Customization of betting systems within the software involves modifying the algorithm to recognize and support various betting strategies.

To achieve this, developers can introduce several custom features:

- 1. Pre-Configured Betting Systems:** Developers can pre-load popular betting systems like Martingale, Fibonacci, and Labouchere into the software. Players can then select their desired system from a menu within the game interface. Once chosen, the software automatically adjusts the player's bets according to the rules of the system.
- 2. Custom Betting Scripts:** For more advanced players, **roulette software** can be customized to accept user-generated scripts. These scripts allow players to create their own betting systems or tweak existing ones. By providing a scripting interface, players can input the rules for their betting strategy, and the software will follow those rules during gameplay.
- 3. AI-Driven Betting Suggestions:** Another layer of customization involves the use of artificial intelligence (AI) to analyze player behavior and recommend betting strategies based on past performance. This feature is not necessarily a pre-configured system but

acts as an adaptive tool that learns from the player's habits and offers tailored betting advice.

4. **Flexible Bet Adjustments:** Roulette software can be designed to allow dynamic bet adjustments based on the outcome of each spin. This is particularly useful for systems like the D'Alembert or Paroli, where the bet size changes depending on the result of the previous round.
5. **Automatic Betting System Execution:** Some players prefer automation, where the software automatically places bets according to the chosen system. In this case, the software tracks win and losses, adjusts the bet size, and places the next bet without requiring manual input from the player.
6. **Multi-System Support:** The software can be customized to allow players to switch between different betting systems in real time or even combine multiple systems. For instance, a player might use the Martingale system for red-black bets but employ a flat betting strategy for odd-even bets.

Benefits of Customizing Roulette Software for Betting Systems

Customizing roulette software to include different betting systems offers several advantages for both players and operators:

1. **Enhanced User Experience:** Customization allows players to enjoy a more personalized gaming experience. They can experiment with different strategies and find the one that works best for them, without having to manually calculate or adjust their bets after each round.
2. **Attracting Advanced Players:** Advanced players who are knowledgeable about betting systems often seek out software that supports their strategies. By offering customizable betting systems, operators can attract a more experienced and dedicated player base.
3. **Increased Player Engagement:** Customizable betting systems keep players engaged for longer periods of time. The ability to try out new strategies or combine systems adds an extra layer of depth to the game, which can lead to increased playtime and, consequently, higher revenues for operators.
4. **Educational Value:** For novice players, customizable betting systems provide an opportunity to learn and experiment with different strategies. Many **roulette software** platforms include tutorials or explanations of how each system works, helping new players understand the mechanics of the game and improve their skills.
5. **Automation and Convenience:** Automation of betting systems reduces the cognitive load on players, allowing them to enjoy the game without constantly worrying about calculations. This convenience is particularly appealing to casual players who want to have fun without getting bogged down in strategy.

Challenges and Considerations

While there are numerous benefits to customizing **roulette software for betting systems**, there are also challenges and considerations that developers and operators must keep in mind:

1. **Complexity of Implementation:** Incorporating multiple betting systems into roulette software requires careful planning and development. Each system has its own set of

rules and behaviors, and ensuring that these are implemented correctly can be a complex task. Additionally, the software must be rigorously tested to ensure that all betting systems function as intended.

2. **Regulatory Compliance:** In many jurisdictions, online gambling is heavily regulated. Customizing **roulette software** to include various betting systems must comply with local laws and regulations. This includes ensuring that the RNG is fair and that the betting systems do not give the player an unfair advantage over the house.
3. **Risk of Over-Optimization:** Some players may become overly reliant on betting systems, believing that they can "beat" the game through strategy. While customization enhances the gaming experience, operators must be transparent about the fact that roulette is ultimately a game of chance, and no betting system can guarantee consistent wins.
4. **Performance and Stability:** Adding multiple betting systems and custom features can increase the complexity of the software, potentially leading to performance issues or bugs. Ensuring that the software remains stable and responsive, even with added customization, is crucial to maintaining a positive user experience.

Ethical and Legal Implications

Customization of roulette software raises ethical and legal questions, particularly regarding fairness and transparency. Operators and developers must adhere to ethical standards, ensuring that players are not misled about the effectiveness of betting systems. Additionally, software customization should not be used to manipulate odds or outcomes in a way that disadvantages players.

In terms of legality, online casinos and software providers must comply with gambling regulations in their respective jurisdictions. This includes obtaining licenses and ensuring that the software is regularly audited by independent bodies to verify fairness.

Conclusion

In conclusion, **roulette software** can indeed be customized to include various betting systems, offering a richer and more engaging experience for players. This customization ranges from pre-configured systems like Martingale and Fibonacci to user-generated scripts and AI-driven recommendations. While the technology allows for a high degree of flexibility, developers and operators must navigate the challenges of implementation, regulatory compliance, and ethical considerations. Ultimately, the ability to customize roulette software enhances the game, providing players with the tools to explore different strategies while maintaining the integrity of the game.