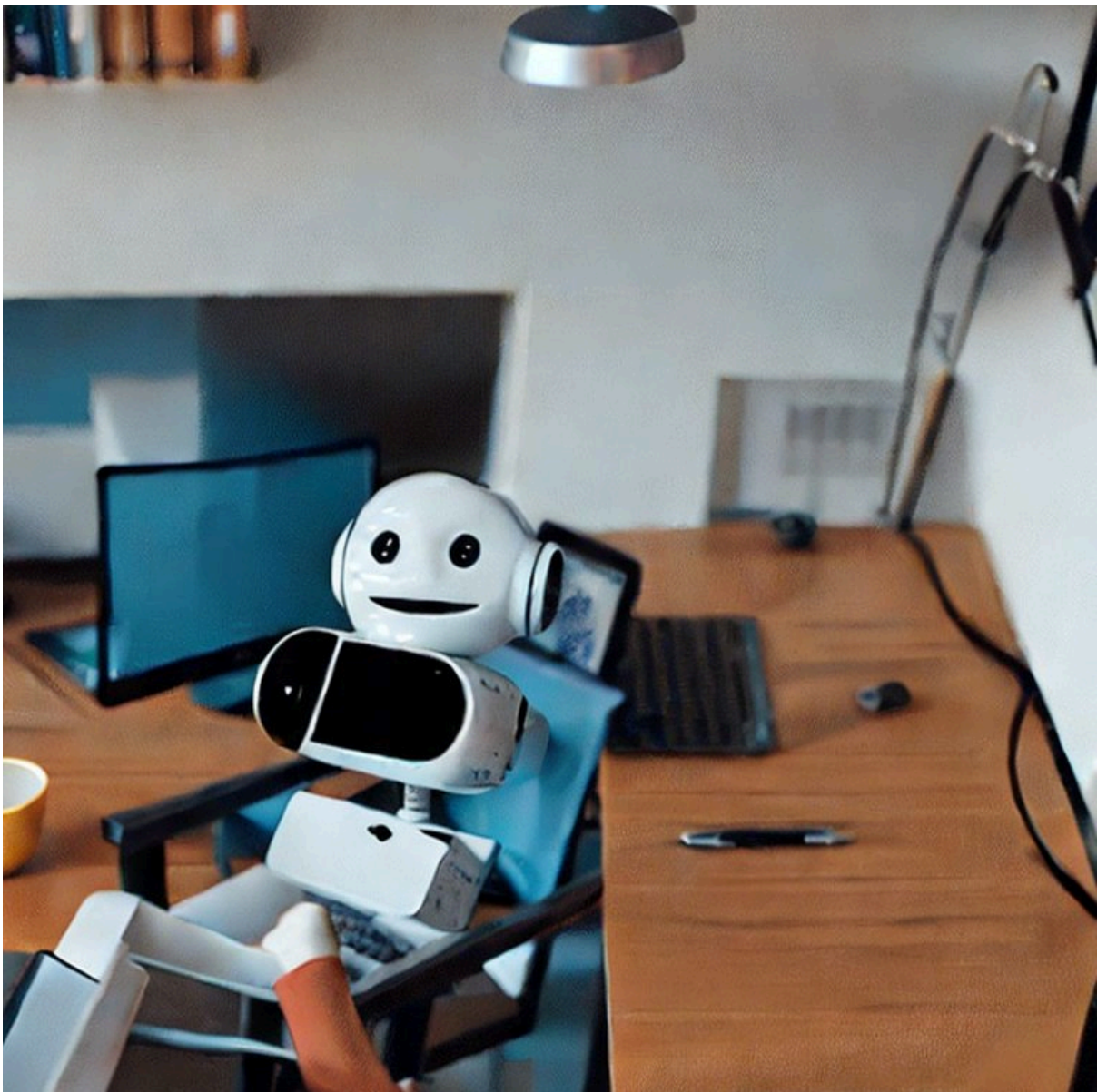


Understanding the Phenomenon of Jipiti Chat: A Deep Dive into Virtual Conversations

Introduction

In the ever-evolving landscape of digital communication, one fascinating phenomenon that has gained prominence is Jipiti Chat. This form of virtual conversation transcends traditional messaging platforms, offering a unique and immersive experience for users. In this article, we will take a comprehensive look at [Jipiti Chat](#), exploring its origins, characteristics, impact on communication, and future prospects.



Origins of Jipiti Chat

Jipiti Chat traces its origins to the convergence of advanced artificial intelligence (AI) algorithms, natural language processing (NLP) techniques, and interactive chat interfaces. It

represents a significant leap forward in how individuals interact with technology, blurring the lines between human-like conversations and automated responses.

The term "Jipiti" itself is derived from a blend of "Jip" (short for "Jupiter") and "iti," signifying the integration of sophisticated technology with intuitive interfaces. This fusion has resulted in chat experiences that mimic human conversations with a level of depth and responsiveness previously unseen in digital communication platforms.

Characteristics of Jipiti Chat

Natural Language Processing (NLP): Jipiti Chat systems leverage advanced NLP algorithms to analyze and interpret user inputs. This allows for more nuanced and context-aware responses, enhancing the overall conversational experience.

Personalization: One of the key strengths of Jipiti Chat is its ability to personalize interactions based on user preferences, historical data, and behavioral patterns. This personalized approach fosters deeper engagement and establishes a stronger connection between users and the chat interface.

Multimodal Communication: Jipiti Chat platforms often support multimodal communication, allowing users to engage through text, voice, images, videos, and even gestures. This versatility adds richness to conversations and caters to diverse communication styles.

Context Retention: Unlike traditional chatbots that often struggle with maintaining context across multiple exchanges, Jipiti Chat systems excel in retaining context. This continuity enables more coherent and meaningful conversations over time.

Impact of Jipiti Chat on Communication

The advent of Jipiti Chat has had a profound impact on how individuals communicate in various contexts:

Enhanced User Experience: Users experience a heightened sense of satisfaction and engagement when interacting with Jipiti Chat systems due to the conversational fluidity and personalized responses.

Efficient Customer Support: Businesses leverage Jipiti Chat for customer support, benefiting from its ability to handle inquiries, resolve issues, and provide relevant information in real time, thereby enhancing customer satisfaction and loyalty.

Educational Applications: Jipiti Chat extends its utility to educational settings, facilitating interactive learning experiences, personalized tutoring, and adaptive feedback mechanisms for students.

Social Interaction: In social settings, Jipiti Chat platforms foster meaningful connections by facilitating group conversations, sharing multimedia content, and organizing virtual events seamlessly.

Workplace Collaboration: Within organizations, Jipiti Chat streamlines internal communication, project management, and collaboration among teams, leading to improved productivity and innovation.

Future Prospects of Jipiti Chat

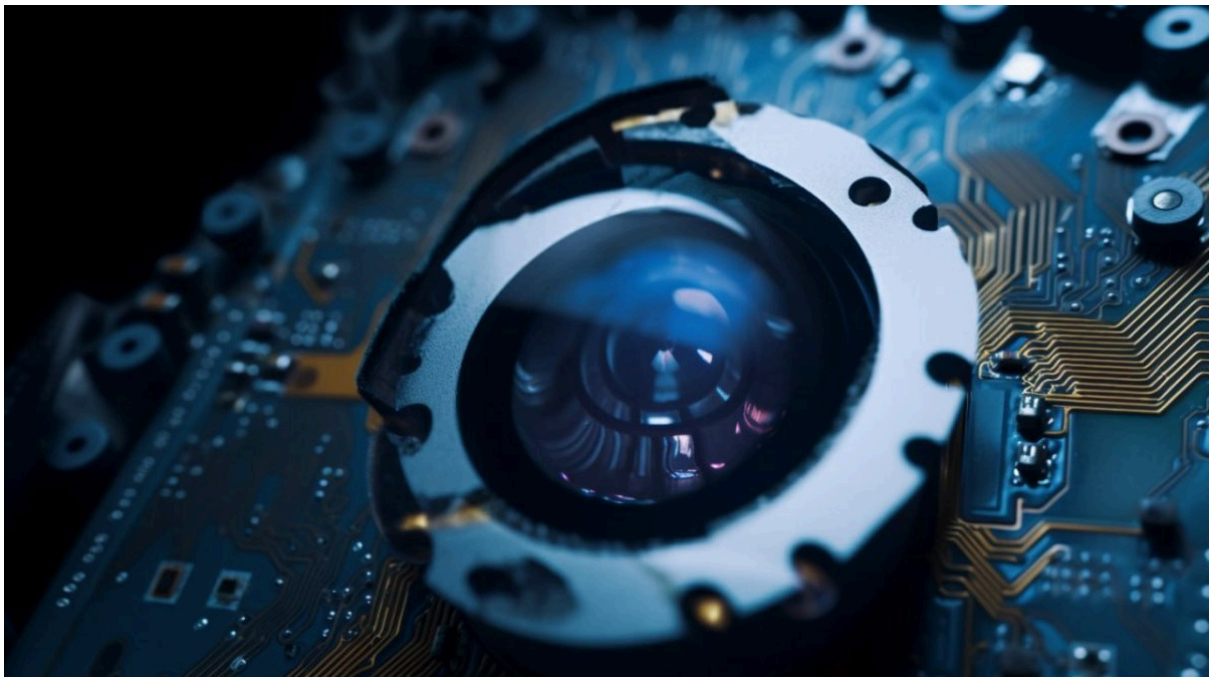
Looking ahead, the future of Jipiti Chat holds tremendous potential for innovation and expansion:

AI Advancements: Continued advancements in AI and NLP technologies will further enhance the capabilities of Jipiti Chat, enabling more sophisticated interactions and personalized experiences.

Integration with IoT: Jipiti Chat is poised to integrate with the Internet of Things (IoT) ecosystem, enabling seamless communication between devices, smart homes, and virtual assistants.

Industry-Specific Solutions: Various industries, including healthcare, finance, retail, and entertainment, will adopt specialized Jipiti Chat solutions tailored to their unique needs, driving efficiency and customer satisfaction.

Ethical Considerations: As Jipiti Chat evolves, ethical considerations around data privacy, bias mitigation, and responsible AI deployment will become increasingly important, shaping the development and deployment of these systems.



In conclusion, Jipiti Chat represents a transformative evolution in virtual conversations, bridging the gap between human interaction and technological innovation. By understanding its origins, characteristics, impact, and future prospects, we gain valuable insights into the dynamic landscape of digital communication and its potential to redefine how we engage with technology and each other.